

JANE

Full Depth





JANE

The Jane cabinets are a timeless design, with the finger pull door and drawer profile they add a simple elegance to any bathroom. Cabinets are a full depth 460mm unit and come complete with a plinth attached and Legs included for an alternate style. White gloss cabinets or textured oak cabinets.

Soft close doors, full extension standard drawer runners.

White Gloss units available in 600, 750, 900, 1200 sizes. Also available with left hand drawers.

Textured Oak cabinets available in 900 and 1200mm Right hand drawers only

Choice of Ceramic console tops

Solid surface bench top options in 20mm, choice of colours.

Choice of Ceramic basins



Ceramic basins



MINI ERIN

310mm x 310mm x 110mm



ERIN

370 Round x 120mm



MINI ANITA

320mm x 110mm



ANITA

400mm x 110mm



MINI CRUZE

370mm x 250mm x 110



CRUZE

460mm x 325mm x 140

Plug and waste not supplied

Ceramic basins



EMILY

525mm x 300mm x 115mm



EGG

415mm x 330mm x 140mm



KONA

500mm x 380mm x 120mm



DARIA

500mm x 340mm x 110mm



**PYE
Fluted**

370R x 125mm

Plug and waste not supplied

SEMI INSET CERAMIC BASINS



BAILEY SEMI INSET
480 X 300 X 60 out



TATUM SEMI INSET
405r x 65 out



VIOLA SEMI INSET
530x340 x 65 out

Ceramic Console tops



Linda
900,1200



ELISE 30MM
900,1200



Allure
900,1200

32mm Plug and waste required

20MM SOLID SURFACE BENCH TOP COLOURS



PEBBLE



WHITE



BMW



SLATE

Printing processes impose limitations on exact colour reproductions. Images are representative of colours only . Actual colour should be checked at your local stockist

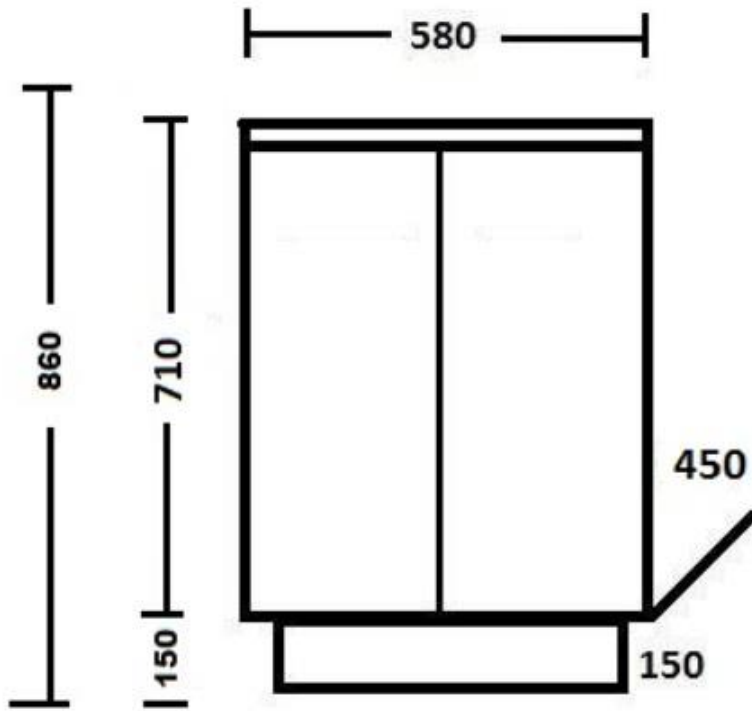
What is Solid Surface

Solid surface is a man-made, non-porous composite material comprising of acrylic resins, polyester resins and pigments, it is extremely durable, hygienic and repairable. Solid Surface is easy to maintain in the home and has been a trusted material in the Bathroom and Kitchen Industry for many years.

Solid Surface has the look of stone and is **100% Silica free**

Ledin

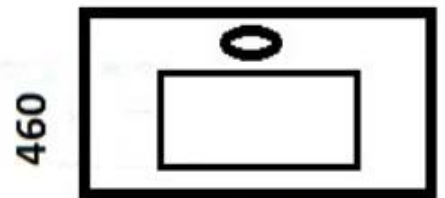
AUSTRALIA



600 JANE



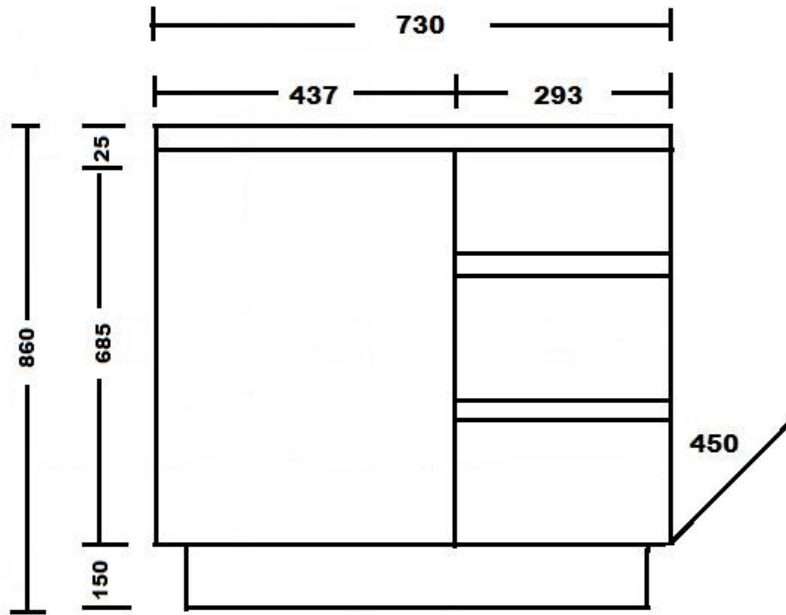
LEGS
150mm HIGH



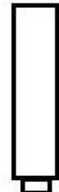
600

Ledin

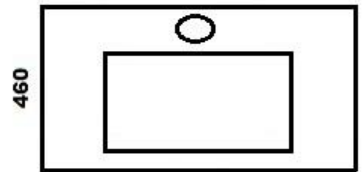
AUSTRALIA



750 JANE CABINET



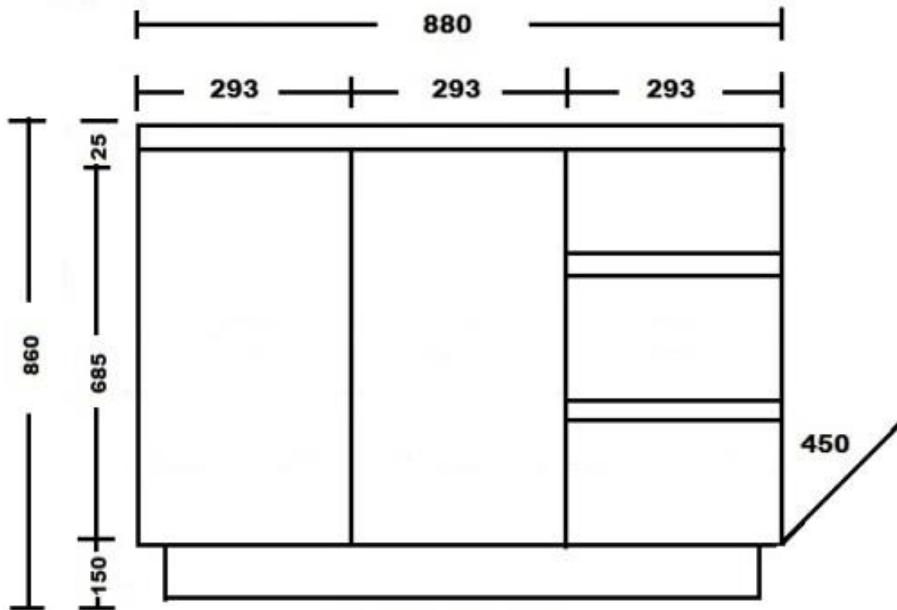
LEGS
150mm HIGH



750

Ledin

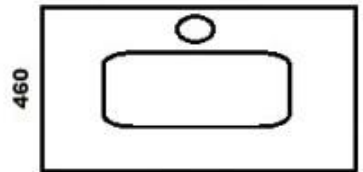
AUSTRALIA



900 JANE CABINET



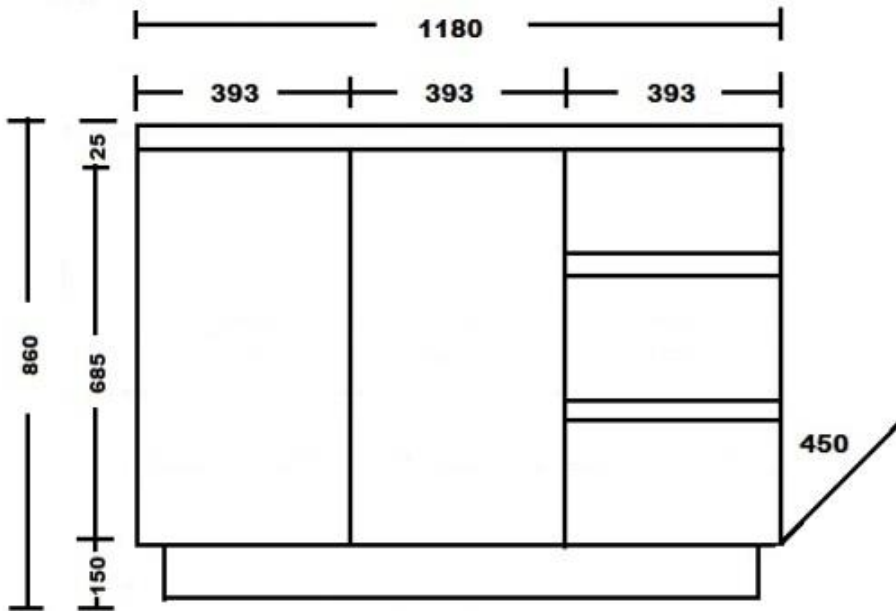
LEGS
150mm HIGH



900

Ledin

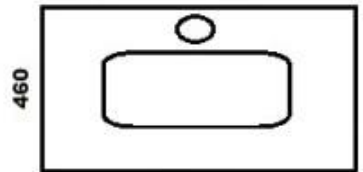
AUSTRALIA



1200 JANE CABINET



**LEGS
150mm HIGH**



1200



**Unit 11, 274 -276 Hoxton Park Rd Prestons NSW
All mail to P.O Box 364 Padstow NSW 2211**

Fax: 02 858 289 81

Email: sales@ledinaustralia.com.au

Website: www.ledinaustralia.com.au

Warranty information

Ledin Australia Pty Ltd warrants the products we distribute for the period of five years from the date of purchase. Ledin Australia Pty Ltd will at its discretion, pursuant to its obligations under the competition and consumers act 2010: repair or replace the defective product or parts.

ALL ITEMS MUST BE INSPECTED THOROUGHLY BEFORE INSTALLATION. FOR FAULTS OR DAMAGE. IF A FAULT IS FOUND IMMEDIATELY NOTIFY LEDIN AUSTRALIA OR YOUR PLACE OF PURCHASE. THE ITEM MUST NOT BE INSTALLED WITHOUT AUTHORITY FROM LEDIN AUSTRALIA PTY LTD. NO CLAIMS WILL BE ACCEPTED WITHOUT THIS AUTHORITY

This warranty does not cover damage by improper installation, neglect or misuse, improper care and maintenance, water damage and natural causes such as sunlight or excessive humidity. It should be noted that all cabinets are manufactured from water resistant materials but are **not waterproof**. All care must be taken immediately to dry any spillage of water that may gain entry to the cabinet. All claims for warranty should be reported to the original place of purchase with a copy of purchase receipt. Cabinets must not be affixed in by tiles, and cabinets must be installed in such a way that they can be removed if required without disturbing any tiles. Cabinets must be protected from water from baths and showers by protective screens. **CABINETS MUST BE SCREWED TO THE WALL**

Regulation 90 of the ACL 2010 states: Our goods come with guarantees that that cannot be excluded under the Australian consumer law. You are entitled to a replacement or refund for a major failure and for compensation for any other reasonably foreseeable loss or damage. You are also entitled to have the goods repaired or replaced if the goods fail to be of acceptable quality and the failure does not amount to a major failure.