

Ledin
AUSTRALIA

DESIGNER BATHROOM
FURNITURE
ALWAYS IN STYLE

SEAVIEW



www.ledinaustralia.com.au

SEAVIEW

The Seaview wall mounted door and drawer unit will bring that fresh coastal feel to any bathroom. Beech coloured Fluted Timber only.

Full depth 460mm, 600 , 900 and 1200 sizes

Choice of Linda or Allure Ceramic tops.

Choice of 12mm or 20mm Solid Surface Bench tops

NOTE: 600mm is Drawer unit only.



Ceramic Console tops



Linda
600,900,1200
460mm deep



Allure
600,900,1200
460mm deep



ON COUNTER

CERAMIC BASINS



MINI ERIN-EDGE
310r X 110



MINI ERIN
310r x100



ANITA
400r x 110



ERIN EDGE
370r X 120



ERIN
370r X 120



DARIA
500x340x110



CRUZE -EDGE
460x325x140



CRUZE
460x325x140



EMILY
525x300x115



32mm Plug and waste required

ON COUNTER

CERAMIC BASINS



PETITE ENSUITE
405 X 110 X 95



PAIGE ENSUITE
425 x 310 X 125



CHEZ
400 X 400 X 120



HALO
360r X 130



PYE
370r X 125



SARINA
500x350x90



KONA
500x380x120



EGG
415x330x140

32mm Plug and waste required

SEMI INSET

CERAMIC BASINS



BAILEY SEMI INSET
480 X 300 X 60 out



TATUM SEMI INSET
405r x 65 out



VIOLA SEMI INSET
530x340 x 65 out



32mm Plug and waste required

BENCH TOP COLOURS

12MM SOLID SURFACE BENCH TOP COLOURS



CARRARA



GRECO



SLATE



VALENCIA



PEBBLE



WHITE



BMW

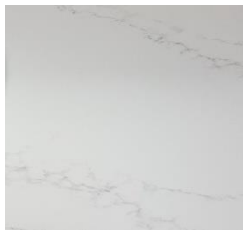


HUSK

20MM SOLID SURFACE BENCH TOP COLOURS



CARRARA



GRECO



SLATE



VALENCIA



PEBBLE



WHITE



BMW

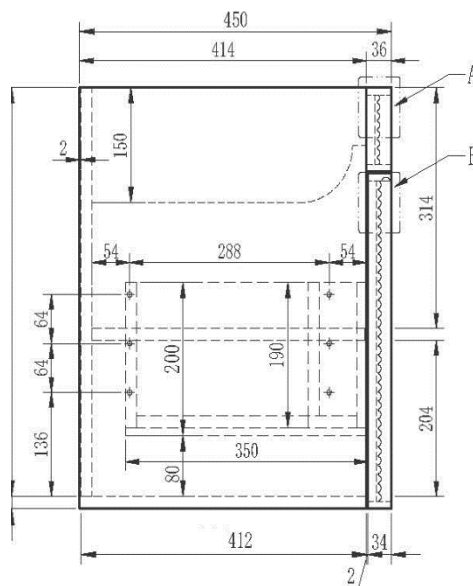
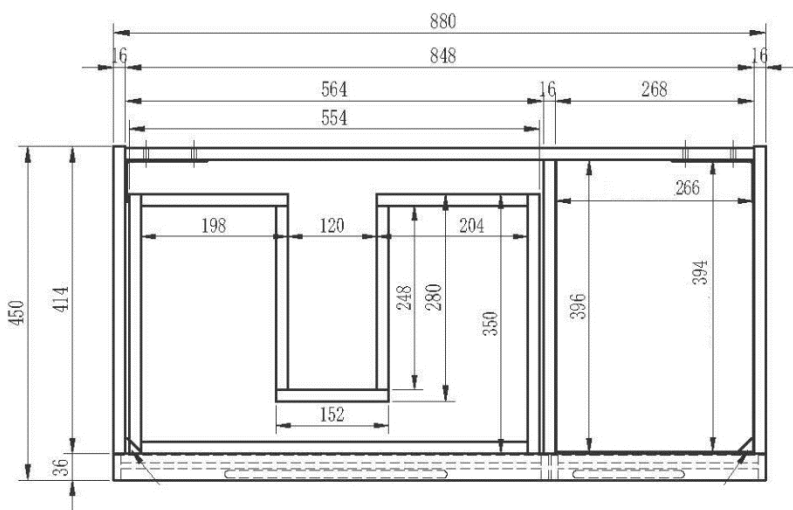
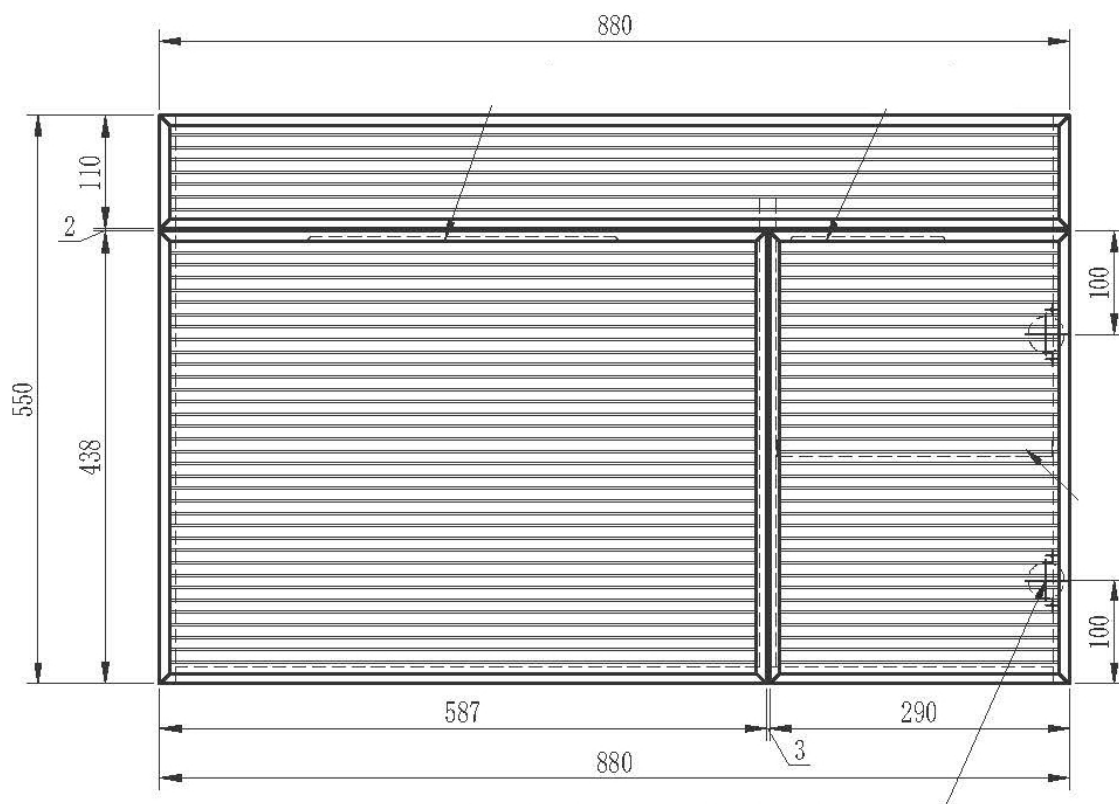


HUSK

Ledlin

AUSTRALIA

900 SEAVIEW

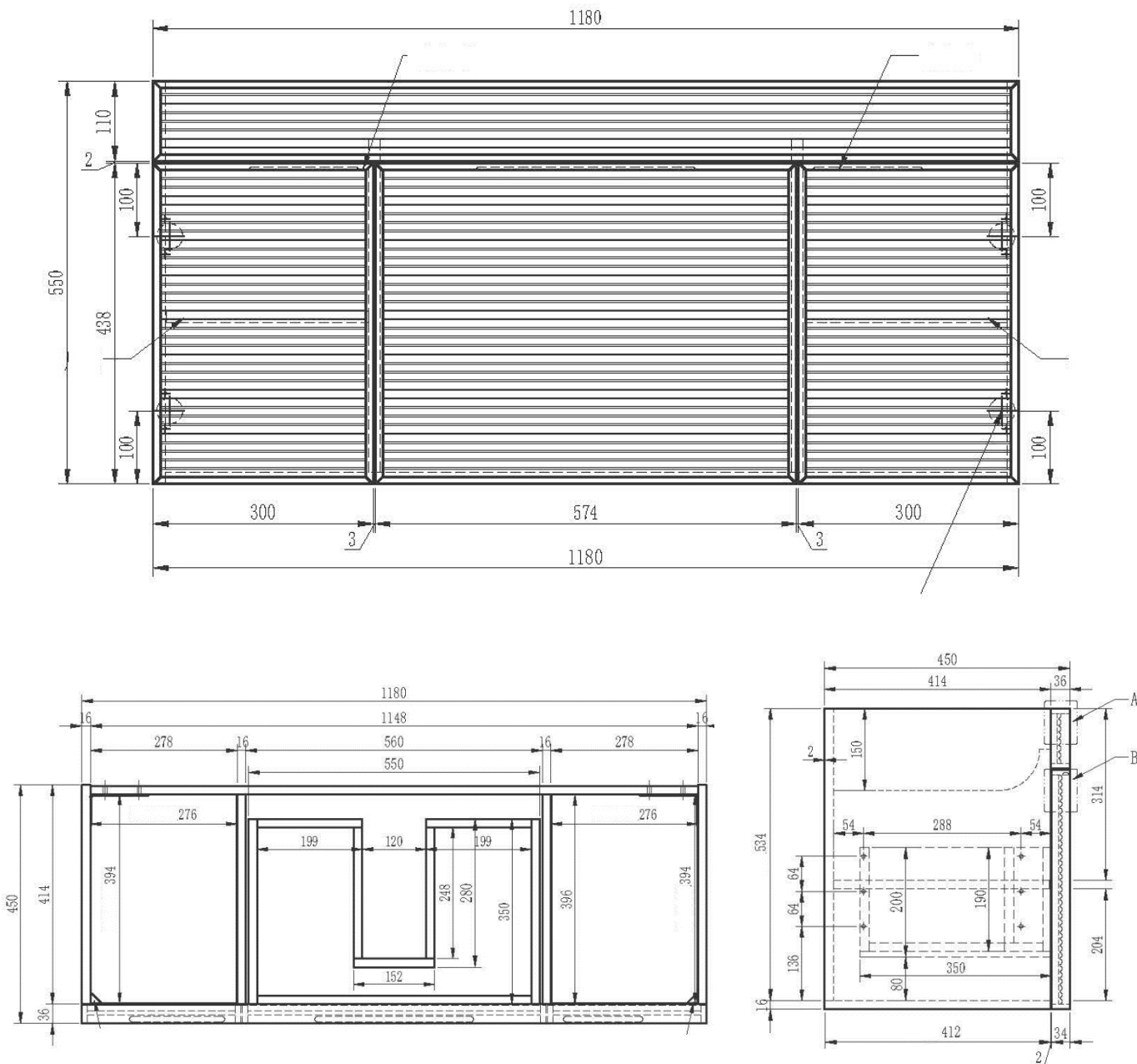


BENCHTOP 900 X 460

Ledin

AUSTRALIA

1200 SEAVIEW



BENCHTOP 1200 X 460



Warehouse and contact details

Unit 11, 274 -276 Hoxton Park Rd Prestons NSW

All mail to P.O Box 364 Padstow NSW 2211

Fax: 02 858 289 81

Email: sales@ledinaustralia.com.au

Website: www.ledinaustralia.com.au

Warranty information

Ledin Australia Pty Ltd warrants the products we distribute for the period of five years from the date of purchase. Ledin Australia Pty Ltd will at its discretion, pursuant to its obligations under the competition and consumers act 2010: repair or replace the defective product or parts.

ALL ITEMS MUST BE INSPECTED THOROUGHLY BEFORE INSTALLATION. FOR FAULTS OR DAMAGE. IF A FAULT IS FOUND IMMEDIATELY NOTIFY LEDIN AUSTRALIA OR YOUR PLACE OF PURCHASE. THE ITEM MUST NOT BE INSTALLED WITHOUT AUTHORITY FROM LEDIN AUSTRALIA PTY LTD. NO CLAIMS WILL BE ACCEPTED WITHOUT THIS AUTHORITY

This warranty does not cover damage by improper installation, neglect or misuse, improper care and maintenance, water damage and natural causes such as sunlight or excessive humidity. It should be noted that all cabinets are manufactured from water resistant materials but are **not waterproof**. All care must be taken immediately to dry any spillage of water that may gain entry to the cabinet. All claims for warranty should be reported to the original place of purchase with a copy of purchase receipt. Cabinets must not be affixed in by tiles, and cabinets must be installed in such a way that they can be removed if required without disturbing any tiles. Cabinets must be protected from water from baths and showers by protective screens. **CABINETS MUST BE SCREWED TO THE WALL**

Regulation 90 of the ACL 2010 states: Our goods come with guarantees that that cannot be excluded under the Australian consumer law. You are entitled to a replacement or refund for a major failure and for compensation for any other reasonably foreseeable loss or damage. You are also entitled to have the goods repaired or replaced if the goods fail to be of acceptable quality and the failure does not amount to a major failure.

LEDIN AUSTRALIA IS 100% AUSTRALIAN OWNED